



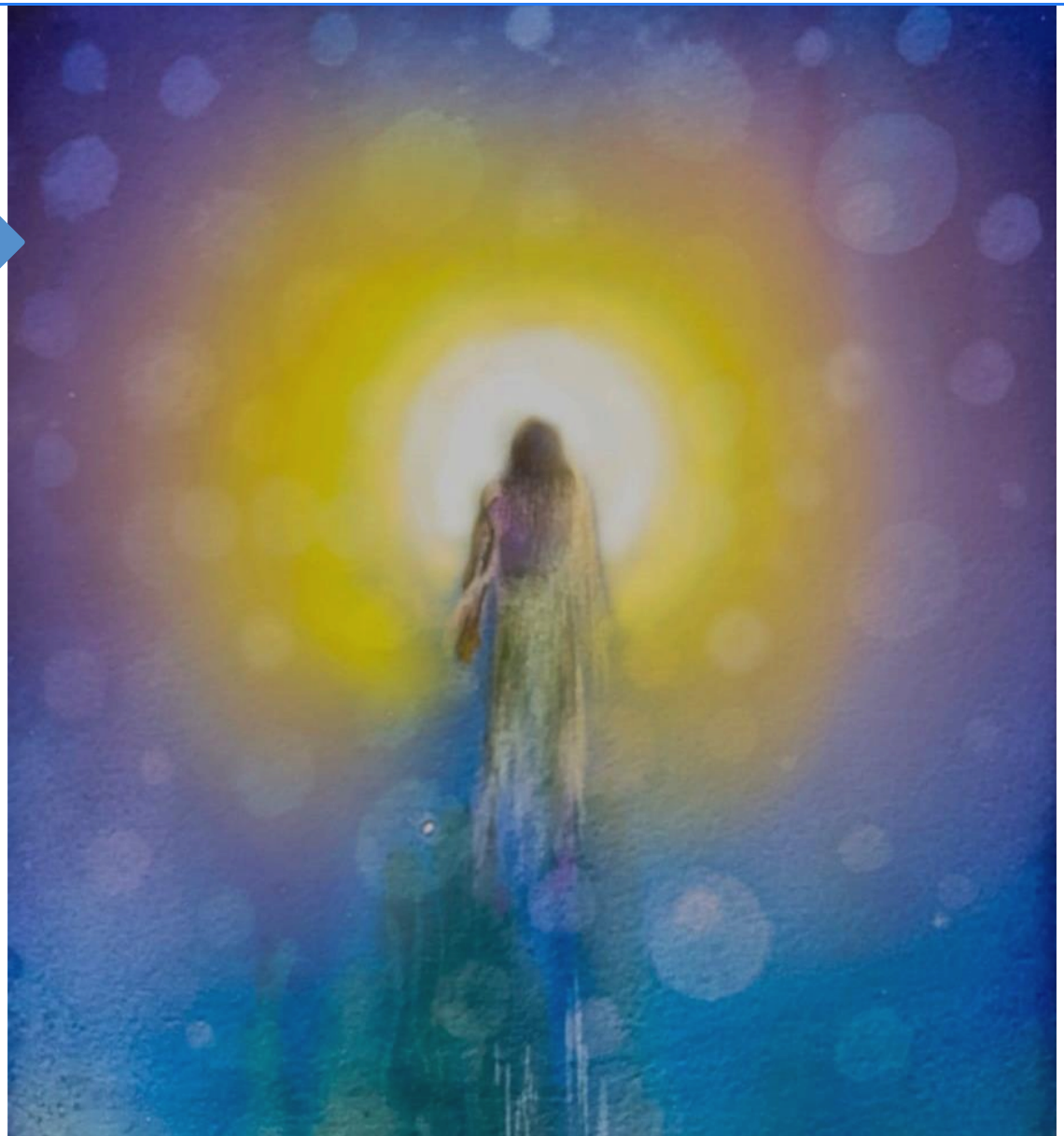
The Mother's International School

Sri Aurobindo Marg  
New Delhi – 110016

### **School Calendar**

Senior Wing  
**2023-2024**

Phone : 011 26964140  
Website : [www.themis.in](http://www.themis.in)  
E-mail : [contact@themis.in](mailto:contact@themis.in)



*The Light has come, the road has opened, with a grateful bow to the laborious past,  
We shall move swiftly forward on the way opened wide by Thee before us.*

*The Mother*

APRIL 2023

MAY 2023

JUNE 2023

| SUN | MON | TUE | WED | THU | FRI | SAT |  | SUN | MON | TUE | WED | THU | FRI | SAT |  | SUN | MON | TUE | WED | THU | FRI | SAT |
|-----|-----|-----|-----|-----|-----|-----|--|-----|-----|-----|-----|-----|-----|-----|--|-----|-----|-----|-----|-----|-----|-----|
|     |     |     |     |     |     | 1   |  |     | 1   | 2   | 3   | 4   | 5   | 6   |  |     |     |     |     | 1   | 2   | 3   |
| 2   | 3   | 4   | 5   | 6   | 7   | 8   |  | 7   | 8   | 9   | 10  | 11  | 12  | 13  |  | 4   | 5   | 6   | 7   | 8   | 9   | 10  |
| 9   | 10  | 11  | 12  | 13  | 14  | 15  |  | 14  | 15  | 16  | 17  | 18  | 19  | 20  |  | 11  | 12  | 13  | 14  | 15  | 16  | 17  |
| 16  | 17  | 18  | 19  | 20  | 21  | 22  |  | 21  | 22  | 23  | 24  | 25  | 26  | 27  |  | 18  | 19  | 20  | 21  | 22  | 23  | 24  |
| 23  | 24  | 25  | 26  | 27  | 28  | 29  |  | 28  | 29  | 30  | 31  |     |     |     |  | 25  | 26  | 27  | 28  | 29  | 30  |     |
| 30  |     |     |     |     |     |     |  |     |     |     |     |     |     |     |  |     |     |     |     |     |     |     |

| DATE  | DAY     | EVENT  | DATE | DAY     | EVENT   | DATE | DAY | EVENT                                 |
|-------|---------|--|------|---------|---|------|-----|---------------------------------------|
| 1     | Sat     | New session commences for Classes 6-10   | 5    | Fri     | <b>Buddha Purnima- GH</b>                                       | 28   | Wed | Staff Meeting                         |
| 3     | Mon     | New session commences for Class 12   | 6    | Sat     | Parent-Teacher Meeting<br>Senior Section (Holiday for Students) |      |     | Mid Term-1 Assessment<br>for Class 12 |
| 4     | Tue     | <b>Mahavir Jayanti- GH</b>   | 9    | Tue     | Rabindra Jayanti- Celebrations in the<br>Language Classes       | 29   | Thu | <b>Eid -ul- Zuha (Bakrid)- GH</b>     |
| 5     | Wed     | New session commences for Class 11   |      |         |   |      |     |                                       |
| 7     | Fri     | <b>Good Friday- GH</b>   | 4-11 | Thu-Thu | History Week: Classes 6-8, 11-12                                | 30   | Fri | Staff Meeting                         |
| 10    | Mon     | Selection of Options for Work Experience,<br>Hobby, Performing Arts - Classes 6-8<br>Performing Arts, SEWA- Classes 9-10<br>SEWA- Class 11 | 13   | Sat     | <b>Summer Vacation Commences</b>                                |      |     |                                       |
| 13    | Thu     | House Meeting and Election of House<br>Captains  |      |         |   |      |     |                                       |
| 14    | Fri     | Elections of Class Prefects: Classes 6-12  |      |         |   |      |     |                                       |
| 17    | Mon     | <b>Dr. K.R. Srinivasa Iyengar Memorial<br/>Award:</b> Class 8<br>Award for 100% Attendance (2022-2023)                                     |      |         |   |      |     |                                       |
| 18    | Tue     | <b>Investiture Ceremony</b>  |      |         |   |      |     |                                       |
| 17-20 | Mon-Thu | Earth Day Celebration: Classes 6-8   |      |         |   |      |     |                                       |
| 20    | Thu     | <b>ABHIVYAKTI</b><br>School Foundation Day Celebration   |      |         |   |      |     |                                       |
| 22    | Sat     | <b>Eid-ul-Fitr – GH</b>  |      |         |   |      |     |                                       |
| 28    | Fri     | <b>Implicata:</b> Classes 11-12<br>(Classroom Activity)  |      |         |   |      |     |                                       |
| 28-29 | Fri-Sat | <b>Athletic Meet:</b> Classes 7 & 8 (under14)  |      |         |   |      |     |                                       |



JULY 2023

AUGUST 2023

SEPTEMBER 2023

| SUN | MON | TUE | WED | THU | FRI | SAT |  | SUN | MON | TUE | WED | THU | FRI | SAT |  | SUN | MON | TUE | WED | THU | FRI | SAT |
|-----|-----|-----|-----|-----|-----|-----|--|-----|-----|-----|-----|-----|-----|-----|--|-----|-----|-----|-----|-----|-----|-----|
|     |     |     |     |     |     | 1   |  |     |     | 1   | 2   | 3   | 4   | 5   |  |     |     |     |     |     | 1   | 2   |
| 2   | 3   | 4   | 5   | 6   | 7   | 8   |  | 6   | 7   | 8   | 9   | 10  | 11  | 12  |  | 3   | 4   | 5   | 6   | 7   | 8   | 9   |
| 9   | 10  | 11  | 12  | 13  | 14  | 15  |  | 13  | 14  | 15  | 16  | 17  | 18  | 19  |  | 10  | 11  | 12  | 13  | 14  | 15  | 16  |
| 16  | 17  | 18  | 19  | 20  | 21  | 22  |  | 20  | 21  | 22  | 23  | 24  | 25  | 26  |  | 17  | 18  | 19  | 20  | 21  | 22  | 23  |
| 23  | 24  | 25  | 26  | 27  | 28  | 29  |  | 27  | 28  | 29  | 30  | 31  |     |     |  | 24  | 25  | 26  | 27  | 28  | 29  | 30  |
| 30  | 31  |     |     |     |     |     |  |     |     |     |     |     |     |     |  |     |     |     |     |     |     |     |

| DATE | DAY | EVENT  | DATE  | DAY     | EVENT  | DATE  | DAY     | EVENT  |
|------|-----|--|-------|---------|--|-------|---------|--|
| 1    | Sat | School resumes after Summer Vacation   | 1     | Tue     | <b>MINET:</b> Inter-School Computer Fest   | 2     | Sat     | Samadhi Day of Shri Surendra Nath Jauhar 'Faquir' Satsang 7:00 p.m. (Ashram) |
| 6    | Thu | Vigyapan Rachna Pratiyogita: Class 10  | 8     | Tue     | <b>LUMINAIRE:</b> Inter-School Competition   | 5     | Tue     | Teachers' Day Celebration  |
| 14   | Fri | Inter-House Competition (French): French National Day Celebrations   | 13    | Sun     | <b>Shri Surendra Nath Jauhar 'Faquir' Birthday Celebration</b><br>Satsang 6:30 p.m. (Ashram)   | 7     | Thu     | <b>Janmashtami – GH</b>  |
| 15   | Sat | World Population Debate: Classes 11-12,<br><br>Inter-House Debate (Hindi): Classes 9-10                                    | 14    | Mon     | <b>Independence Day Celebrations: Special Assembly</b><br><br><b>Sri Aurobindo's Birthday Celebration</b>  | 8-20  | Fri-Wed | Mid- Term Examination: Classes 6-12  |
| 20   | Thu | Inter-Section recitation of Shakespeare's Soliloquies: Classes 11-12<br><br>Fields Day (Mathematics Activity): Classes 6-8 | 15    | Tue     | <b>Independence Day- GH</b><br><br><b>Sri Aurobindo's Birthday</b><br>Satsang 10:00 a.m. (Ashram)<br><br><b>Lights of Aspiration</b><br>Satsang 6:30 p.m. (Ashram) | 19    | Tue     | <b>Ganesh Chaturthi- RH</b>  |
| 21   | Fri | Enact a Story: Class 7   | 16-21 | Wed-Mon | <b>Shri Surendra Nath Jauhar 'Faquir' Memorial Invitational Inter-School Football Tournament</b>   | 28    | Thu     | <b>Eid-e-Milad- GH</b>   |
| 22   | Sat | <b>Accolades Day</b>   |       |         |  | 29-30 | Fri-Sat | Career Counselling   |
| 25   | Tue | <b>INFINITY:</b> Annual Physics Club Activities  |       |         |  | 30    | Sat     | Special Assembly: Gandhi Jayanti   |
| 26   | Wed | Debate (English): Class 8<br><br>Inter-Section Turncoat Debate: Classes 9-10   | 22    | Tue     | Equity: Intra-School Commerce Activity<br>Classes 11-12  |       |         |  |
| 28   | Fri | Poetry Recitation: Class 6   | 26    | Sat     | Parent-Teacher Meeting<br>Senior Section (Holiday for Students)  |       |         |  |
| 29   | Sat | <b>Muharram- GH</b>  | 30    | Wed     | <b>Raksha Bandhan- RH</b>  |       |         |  |





OCTOBER 2023

NOVEMBER 2023

DECEMBER 2023

| SUN | MON | TUE | WED | THU | FRI | SAT |  | SUN | MON | TUE | WED | THU | FRI | SAT |  | SUN | MON | TUE | WED | THU | FRI | SAT |   |
|-----|-----|-----|-----|-----|-----|-----|--|-----|-----|-----|-----|-----|-----|-----|--|-----|-----|-----|-----|-----|-----|-----|---|
| 1   | 2   | 3   | 4   | 5   | 6   | 7   |  |     |     |     | 1   | 2   | 3   | 4   |  |     |     |     |     |     |     | 1   | 2 |
| 8   | 9   | 10  | 11  | 12  | 13  | 14  |  | 5   | 6   | 7   | 8   | 9   | 10  | 11  |  | 3   | 4   | 5   | 6   | 7   | 8   | 9   |   |
| 15  | 16  | 17  | 18  | 19  | 20  | 21  |  | 12  | 13  | 14  | 15  | 16  | 17  | 18  |  | 10  | 11  | 12  | 13  | 14  | 15  | 16  |   |
| 22  | 23  | 24  | 25  | 26  | 27  | 28  |  | 19  | 20  | 21  | 22  | 23  | 24  | 25  |  | 17  | 18  | 19  | 20  | 21  | 22  | 23  |   |
| 29  | 30  | 31  |     |     |     |     |  | 26  | 27  | 28  | 29  | 30  |     |     |  | 24  | 25  | 26  | 27  | 28  | 29  | 30  |   |
|     |     |     |     |     |     |     |  |     |     |     |     |     |     |     |  | 31  |     |     |     |     |     |     |   |

| DATE  | DAY      | EVENT  | DATE  | DAY         | EVENT  | DATE | DAY | EVENT   |
|-------|----------|--|-------|-------------|--|------|-----|---|
| 2     | Mon      | <b>Mahatma Gandhi's Birthday- GH</b>   | 1     | Wed         | <b>Karva Chauth- RH</b>  | 1    | Fri | Kahani Vaachan: Class 8   |
| 7     | Sat      | Parent-Teacher Meeting<br>Senior Section (Holiday for Students)                      | 4     | Sat         | Annual Physical Demonstration  | 2    | Sat | Science Day: Classes 6-8  |
| 10    | Tue      | World Mental Health Day:<br>Classes 11-12  | 9     | Thu         | Inter-House Geo-Map Quiz:<br>Classes 6-10  | 5    | Tue | <b>Special Assembly:</b><br><b>Sri Aurobindo's Mahasamadhi Day</b><br>Shradhanjali- Students Pay Homage<br>to Sri Aurobindo<br><b>Satsang: 6:30 p.m. (Ashram)</b> |
| 10-13 | Tue- Fri | Mental Health Week: Classes 6-12   | 10    | Fri         | Prof. Nadkarni Memorial<br>Inter-School Competition  |      |     |   |
| 20-23 | Fri- Mon | <b>Autumn Break</b>  | 12    | Sun         | <b>Diwali -GH</b>  |      |     |   |
| 24    | Tue      | <b>Dussehra Holiday- GH</b>  | 13    | Mon         | <b>Govardhan Puja- RH</b>  | 8    | Fri | Human Rights Day: Classes 9-12  |
| 25    | Wed      | School resumes after Autumn Break  | 15    | Wed         | <b>Bhai Duj- RH</b>  | 16   | Sat | Art Exhibition<br>Parent-Teacher Meeting<br>Senior Section (Holiday for<br>Students)  |
| 27    | Fri      | Samuhik Kavita Vaachan: Class 6<br>Cryptic Crossword- Alchemy Event:<br>Classes 9-12 | 16    | Thu         | Inter-House Quiz: Classes 9-12<br>Sanskrit Quiz: Classes 6-8   | 21   | Thu | Mathematics Day: Special Assembly   |
| 28    | Sat      | <b>Maharishi Valmiki's Birthday- GH</b>  | 17    | Fri         | <b>Special Assembly:</b><br><b>The Mother's Mahasamadhi Day</b><br>Athletic Meet: Classes 9-12   | 22   | Fri | <b>Special Assembly: Christmas</b>  |
| 31    | Tue      | National Unity Day: Classes 9-12   | 21-22 | Tue-<br>Wed |  | 25   | Mon | <b>Christmas- GH</b><br><b>Descent of Light</b><br><b>Satsang 7:00 p.m. (Ashram)</b>  |
|       |          |  | 23    | Thu         | Legal Awareness Day: Classes 9-12<br>Kahani Lekhan Pratiyogita: Class 7  | 30   | Sat | Farewell to Class 12  |
|       |          |  | 24    | Fri         | <b>Guru Teg Bahadur Martyrdom Day- RH</b><br>Darshan Day and Siddhi Day<br><b>Lights of Aspiration,</b><br><b>Satsang 6:30 p.m. (Ashram)</b> |      |     |   |
|       |          |  | 24-26 | Fri-<br>Sun | MISMUN   |      |     |   |
|       |          |  | 25    | Sat         | Mathematics Quiz: Classes 9-12<br><br>Online Quiz 'Evolve-PD'<br>Biology Club Synapse: Classes 9-12  |      |     |   |
|       |          |  | 27    | Mon         | <b>Guru Nanak's Birthday- GH</b>   |      |     |   |



**JANUARY 2024**

**FEBRUARY 2024**

**MARCH 2024**

| SUN | MON | TUE | WED | THU | FRI | SAT |  | SUN | MON | TUE | WED | THU | FRI | SAT |  | SUN | MON | TUE | WED | THU | FRI | SAT |
|-----|-----|-----|-----|-----|-----|-----|--|-----|-----|-----|-----|-----|-----|-----|--|-----|-----|-----|-----|-----|-----|-----|
|     | 1   | 2   | 3   | 4   | 5   | 6   |  |     |     |     |     | 1   | 2   | 3   |  |     |     |     |     |     | 1   | 2   |
| 7   | 8   | 9   | 10  | 11  | 12  | 13  |  | 4   | 5   | 6   | 7   | 8   | 9   | 10  |  | 3   | 4   | 5   | 6   | 7   | 8   | 9   |
| 14  | 15  | 16  | 17  | 18  | 19  | 20  |  | 11  | 12  | 13  | 14  | 15  | 16  | 17  |  | 10  | 11  | 12  | 13  | 14  | 15  | 16  |
| 21  | 22  | 23  | 24  | 25  | 26  | 27  |  | 18  | 19  | 20  | 21  | 22  | 23  | 24  |  | 17  | 18  | 19  | 20  | 21  | 22  | 23  |
| 28  | 29  | 30  | 31  |     |     |     |  | 25  | 26  | 27  | 28  | 29  |     |     |  | 24  | 25  | 26  | 27  | 28  | 29  | 30  |
|     |     |     |     |     |     |     |  |     |     |     |     |     |     |     |  | 31  |     |     |     |     |     |     |

| DATE  | DAY      | EVENT   | DATE | DAY | EVENT  | DATE | DAY | EVENT  |
|-------|----------|---|------|-----|--|------|-----|--|
| 1-14  | Mon-Sun  | <b>Winter Break</b>   | 3    | Sat | Parent-Teacher Meeting Senior Section (Holiday for Students)                 | 30   | Sat | Parent-Teacher Meeting Senior Section (Holiday for Students) |
| 15    | Mon      | School resumes after Winter Break                                       | 12   | Mon | <b>Ashram Foundation Day: Special Assembly</b><br>Satsang 6:00 p.m. (Ashram) |      |     |  |
| 19-20 | Fri- Sat | Khelo MIS: Shri Anil Kumar Jauhar Memorial Sports Workshop: Classes 6-9 |      |     |  |      |     |  |
| 20    | Sat      | <b>Special Assembly: Shri Anil Kumar Jauhar's Birthday</b>              | 21   | Wed | <b>Special Assembly: The Mother's Birthday Celebration</b>                   |      |     |  |
| 25    | Thu      | Republic Day Celebrations   |      |     | Offering of Floral Tribute and Devotional Songs by Students                  |      |     |  |
|       |          | National Voter's Day: Special Assembly                                  |      |     | Lights of Aspiration- Satsang 6:00 p.m. (Ashram)                             |      |     |  |
| 26    | Fri      | <b>Republic Day - GH</b>  | 29   | Thu | <b>Annual Examination</b>  |      |     |  |
| 27    | Sat      | Athletic Talent Hunt: Class 6   |      |     |  |      |     |  |



**School Timings: 8:00 a.m. to 2:00 p.m.**

School will remain **closed** on **Second Saturdays**. School Office will also remain **closed** on **Second Saturdays**.

Any change in the proposed programme will be announced in the Morning Assembly and the same will be uploaded on the School website and Parent Portal.

**Holiday Dates (Gazetted/ Restricted/ Local) for 2024 will be notified later.**